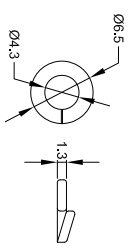
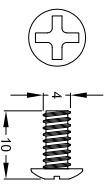


|                                  |                 |                         |  |
|----------------------------------|-----------------|-------------------------|--|
| <b>Revision Notes:</b>           |                 |                         |  |
| 1. MACHINE SCREW LENGTH TO 10MM. |                 |                         |  |
| Checked By: LB                   | Approved By: DK | Date Released: 23/03/12 |  |



**SPRING/LOCK WASHER**  
 QUANTITY: 6  
 WASHER TYPE: SPRING.  
 O/DIAMETER: 6.5MM.  
 I/DIAMETER: 4.3MM.  
 THICKNESS: 1.3MM.  
 MATERIAL: METAL.  
 FINISH: SILVER.



**BODY MOUNTING MACHINE SCREW**  
 QUANTITY: 6  
 THREAD TYPE: M4.  
 DIAMETER: 4MM.  
 LENGTH: 10MM.  
 HEAD TYPE: PHILIPS PAN HEAD.  
 FINISH: SILVER.

- NOTES:**
1. 2 X SPRING/LOCK WASHER & MACHINE SCREWS ARE SUPPLIED SCREWED INTO CAMERA BODY.
  2. REMAINING 4 X SPRING/LOCK WASHERS & MACHINE SCREWS ARE SUPPLIED IN A PRESS SEAL BAG.
  3. DIMENSIONS IN MM

**PROPRIETARY NOTICE**  
 THIS DESIGN AND TECHNICAL INFORMATION APPEARING ON THIS DRAWING IS THE PROPERTY OF BRIGADE ELECTRONICS, AND IS DISCLOSED IN CONFIDENCE. IT IS NOT TO BE COPIED, REPRODUCED, REVEALED TO OR EXPLOITED BY OTHERS, EITHER IN WHOLE OR IN PART WITHOUT THE EXPRESS WRITTEN CONSENT OF BRIGADE ELECTRONICS.



|                    |   |                                |                      |                      |
|--------------------|---|--------------------------------|----------------------|----------------------|
| <br>Third Angle    | Assembly Pl Approval<br>XINYU HUANG(12/11/12) | Approved by<br>DKERAI          | Checked by<br>BCHLDS | Drawn by<br>MBUTLER  |
|                    | Angle of Projection                           | Units<br>mm                    | Scale<br>N/A         | Released<br>15/05/10 |
| Status<br>RELEASED |   | Assembly Ref<br>VBV-7/1XXC FIX |                      |                      |
| Stock Code<br>3191 |   | BE-001056-01-10                |                      |                      |